

Script Proposal

The Secretary's Mystery, By Mario Alberto Gómez

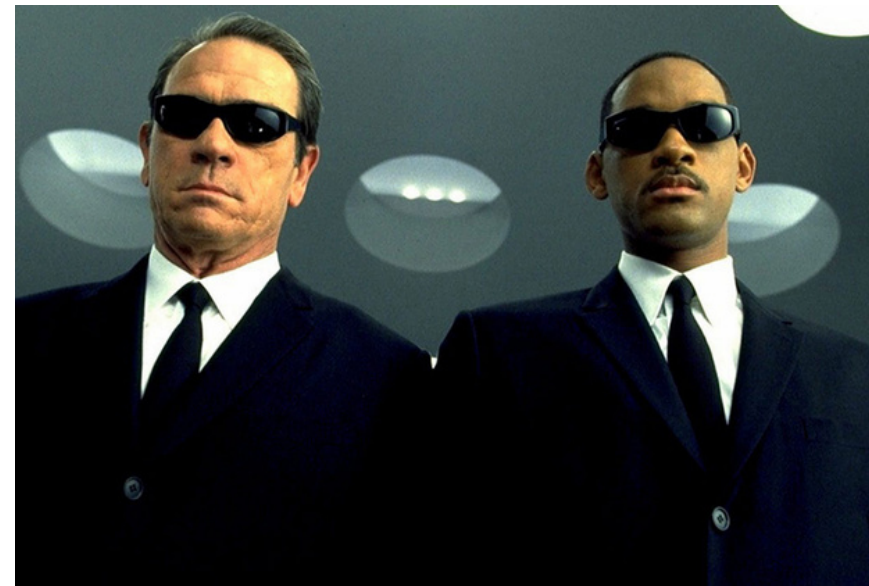
Basic Proposal

Presented as a political thriller, the plot of "The Secretary's Mystery" is set in the early 2020s in the White House.



Clothing

President Andrew Walker and Secretary Jayden Taylor will wear a black tuxedo: black jacket, white shirt with bow tie collar, black pants, plain black bow tie, dark tuxedo cummerbund, and black shoes, but the president will appear without the jacket and with the bow tie unbuttoned.



The two men in black will be dressed in black suit jackets, black pants, black tie and black shoes and white shirts, Ray-Ban sunglasses, and a spy earpiece in each man's right ear.

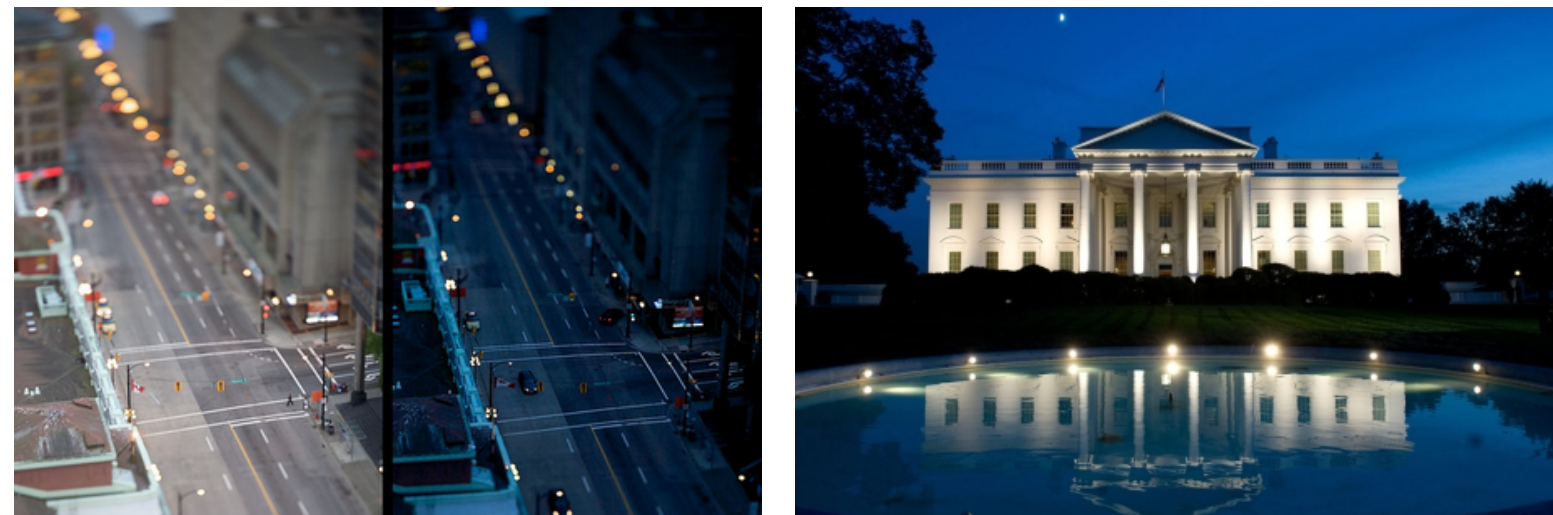
Bob Woodward will wear a white collared shirt and a brown tie.



Illumination

We will use the technique known as American night to simulate night scenes shot in daylight.

To do this, we will shoot the scenes using a blue filter on the camera and underexposing the image, to obtain a darkened and bluish image. In this way, night and moonlight are simulated.



The only scene where the lighting changes is number 5 when we move to the office of journalist Bob Woodward. We will install programmable LED lamps to illuminate the action and use minimal, soft, direct lighting on Bob Woodward's face from sources outside the frame to mitigate any shadows cast on the faces by the overhead lighting.



Sound

The sound will focus on traditional White House noises with the intention of setting the film around sounds associated with American politics, such as the sound effect of Secret Service agents' walkie talkies, the sound of helicopter gunships flying, water falling in the fountain on the South Lawn, telephones ringing, and clock hands turning. The footsteps of the characters are heard as they walk to give a sense of pursuit. In addition, the film's soundtrack will include the song "Fire Storm" by David Arnold.



References

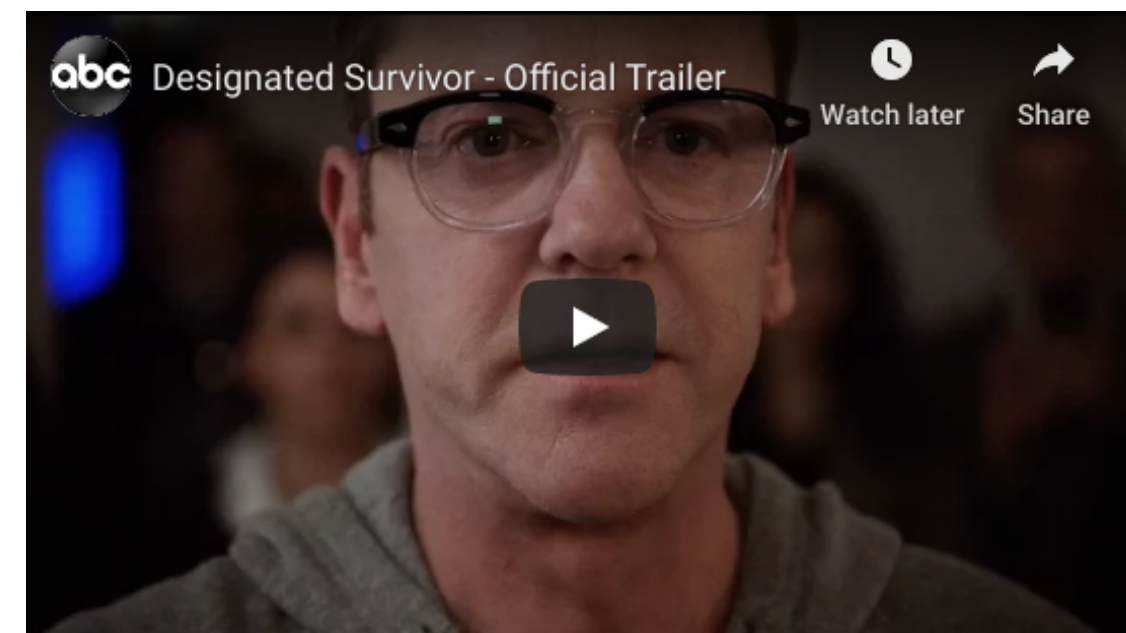
The Post, produced and directed by Steven Spielberg

From this film, we will take as a reference the appearance, clothing, and style of the Post's director, Ben Bradlee, played by Tom Hanks, to set the scene for the performance of journalist Bob Woodward.



Designated Survivor, created by David Guggenheim

From this series, White House scenery and President Thomas Kirkman, played by Kiefer Sutherland, will be used to set the scene for President Andrew Walker and Seth Wright, played by Kalpen Suresh Modi, will be used to set the scene for the press secretary.

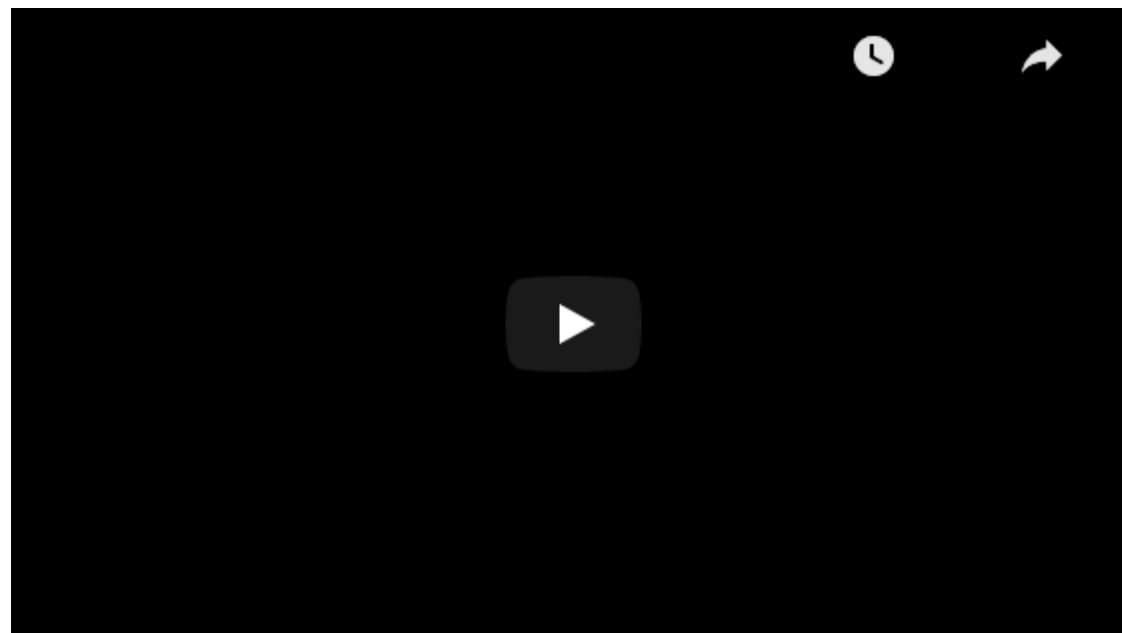


References



The West Wing of the White House, created by Aaron Sorkin

Because it is one of the most acclaimed political thrillers of all time and we rely on the mystery plot around state secrets.



Men in Black, directed by Barry Sonnenfeld

Starring Tommy Lee Jones (Kevin Brown / Agent K) and Will Smith (James Edwards / Agent J), whose appearance we will take to set the scene for the two secret service agents.

Materials and Resources

- An imitation of The Resolute desk
- The press secretary's cell phone
- Bob Woodward's landline phone
- Bob Woodward's typewriter and lamp
- Bob Woodward's classic brown wood desk
- Bob Woodward's cigarette
- A pair of Ray-Ban sunglasses
- Pair of spy earphones
- Camera mounted on wheels (travel)
- Stands and stabilizers Tripods
- Wolfram or blue filter in the camera
- Virtual background template of the Oval Office, West Wing colonnade, and Truman's balcony.
- Water fountain
- Microphone Boom Pole
- Programmable LED fixtures
- Combat helicopter animation
- Roses and lilies

Scene By Scene

Scene number 1

Establishing shot of the context of the short film. We shot a wide shot of the Truman Balcony of the White House and this is where we will use the virtual background templates of the south portico garden and the Truman Balcony. The blue color filter is put on from the first second because the whole film must give the feeling of night and darkness. We see the characters arguing through the window, but we only see the two black silhouettes. In this scene, we hear the sound of the combat helicopter flying over the house and the sound of water falling into the fountain.

Scene number 2

The location changes to the Oval Office, for which we will also use one of the virtual backgrounds and we will put in the center of the recording set the imitation of the Resolute's desk. Behind this imitation, we can already distinguish the characters, dressed in their tuxedos, as we have explained before, and taking as a reference how President Thomas Kirkman is dressed in "Designated Survivor" to dress President Andrew Walker and taking as reference Seth Wright to dress the press secretary. The audio of the conversation will be recorded with the microphone stick.

Scene number 3

The scene begins in the Oval Office, but we start a sequence shot that will end in the west colonnade of the White House. We will focus on the secretary, the camera will follow him and we will hear his footsteps and the sound of the door opening and closing. The sequence shot ends when the secretary takes his cell phone out of his pocket and uses it to call the reporter. We will have a close-up of his cell phone when this happens. When he arrives at the West Colonnade of the White House, we will use another virtual background.

Scene number 5

We change location, we are now in Bob Woodward's office, who is sitting at his classic brown desk, with a typewriter in the center of the table, a lamp illuminating the typewriter and him with the phone in one hand and in the other a cigarette between his index and middle fingers. The character Ben Bradlee in "The Post" gives us the clue to dress Bob Woodward, who will wear only a brown tie and a white shirt. Here, the lighting changes, as programmable LED fixtures will be installed to minimally, softly, and direct light up Bob Woodward's face.

Scene number 4

The location is in the west colonnade of the White House, which as I said earlier, will be shown with a virtual background. The secretary has his cell phone to his ear as he talks to Bob Woodward.

Scene number 6

We return again to the location on the west column of the White House, where the secretary is standing with his cell phone to his ear. We focus when he moves it away from his ear to check the signal. There the two men in black appear, referred to like the two main characters in the film. The men in black, with their black suits, sunglasses and a spy earpiece in each ear. The audio of their conversation is re-recorded with the microphone stick.

Scene 7

The secretary runs away and we hear his footsteps to give a sense of pursuit. We focus the camera on his face to show the expression of concern and anguish on his face.

Scene 8

The camera will be placed at the end of the corridor on a tripod to maintain stillness. We keep hearing the secretary's footsteps, but each time he approaches the camera they sound louder. When he reaches the camera, we hear the thump of the fall.

Scene 9

We hear the footsteps of the two men in black arriving and the sound of the secretary shuffling.